



Solutions For

Buildings





See the Air You Breathe

Elevate every indoor environment with our cutting-edge air quality monitoring solutions. From offices and schools to hotels, restaurants, retail, and medical facilities, Aethair provides real-time indoor air quality data for comprehensive health, safety, and building optimization. Unleash the power of real-time data and analytics to identify and address potential health hazards, offering early warnings and empowering data-driven decision-making. Aethair also serves as a crucial resource for institutional regulatory compliance in health and safety, streamlining the monitoring and data management processes beyond what is provided by other solutions. Choose Aethair for a smarter, healthier, and more sustainable indoor environment—where real-time insights transform the way you live and work.

Certified Calibrated Devices

Aethair devices are fully calibrated and certified, allowing immediate operation and quicker deployment.



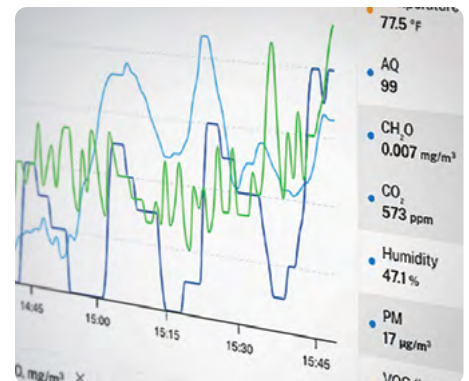
4G LTE Cellular Connectivity

Aethair Devices have global connectivity and are designed with enterprise level security, privacy, and scalability.



24/7 Remote Data Access

Remotely access real-time data from anywhere in the world, at any time, on our web console, Environet.



Monitoring for every sector



Office Spaces

Aethair provides deeper building data offering owners more actionable insights to manage buildings more efficiently and effectively. Building owners can build long-term resilience for their business and better serve tenants and other occupants.



Medical Facilities

Indoor environments play a critical role in patient health, as well as the research and development of medications. Maintaining optimal conditions is essential for ensuring patient health and safety, as well as the integrity of research.



Schools & Universities

Aethair solutions assist in meeting regulation compliance and creating safer indoor spaces for schools, universities, and other educational facilities. They also provide transparency about the health of the indoor environment, letting students, staff, and parents know the indoor air is safe.



Hospitality

Aethair provides hotels with real-time environmental data that can be used to optimize building operations and save on energy costs. Indoor air quality data can be shared with visitors as an added value and to demonstrate that the hotel is taking the necessary precautions to protect guests.



Garages

Monitor garages in real-time to ensure health, safety, and workplace optimization. Address harmful emissions and poor ventilation to mitigate health risks while simplifying regulatory compliance for environmental & occupational health standards.



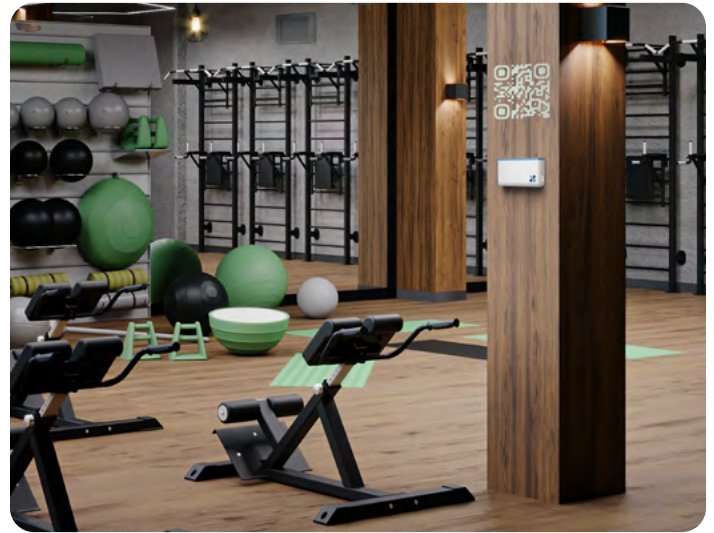
Restaurants

Safeguard your restaurant environment and streamline compliance inspections with Aethair. Our tools monitor indoor conditions, guaranteeing adherence to current and upcoming regulations without compromising efficiency.



Retail Stores

Aethair offers environmental visibility and actionable data that can help improve conditions in retail spaces. Real-time data can be used to optimize HVAC and building system operations while also offering a way to create long-term resilience and better serve tenants, staff, and other occupants.



Gyms & Fitness Centers

Transparent communication of environmental conditions with members and visitors shows which gyms are rising above the competition and adapting to provide a safer and healthier indoor fitness environment. Set your gym apart by offering a uniquely healthier experience.

Don't see your sector? Don't worry – we've got you covered!

These are only a few examples of potential applications for Aethair solutions. Regardless of the indoor space, we have tailored solutions to meet your needs. Reach out to us today to explore how we can assist you in monitoring and optimizing your indoor environment: Email: sales@aethair.io Phone: +1 (267) 225-8487

Redefining Air Quality Monitoring

Aethair IAQ is precision-calibrated and certified for exceptional accuracy, all at a fraction of the cost of typical solutions. Aethair IAQ accurately monitors and continuously reports on-site air quality in real-time, enabling effective remediation, informed decision-making, and even automation.

Unmatched Performance

The only low-cost device on the market that is calibrated & certified according to institutional standards, with performance correlating to over 90% of that of reference instruments.

Intelligent Analytics

Its powerful processor combines AI and machine learning to monitor and collect data accurately, helping to identify and classify potentially dangerous events (smoke, gases, etc).

Secure Standalone Connectivity

An independent and self-sufficient device that utilizes 3G/4G, WiFi, Bluetooth, and mesh to connect the to our cloud, without the need for a local network, eliminating any security concerns.



Built-In Sensors

Aethair IAQ is designed with pre-calibrated, accurate sensors that monitor key air quality parameters:



Air Quality Index

The Aethair Air Quality Index provides a quick overview of their indoor air quality, determined by real-time data and advanced algorithms.



VOCs

Volatile organic compounds (VOCs), are chemicals with potential negative impacts on health over both short and long periods of time.



Pressure

Differences in pressure increase/decrease airflow, spreading airborne contaminants, as well as playing a role in joint pain and occupant discomfort.



Particulate Matter

Particles can linger in the atmosphere and also travel deep into the body causing both short and long term negative health effects.



Formaldehyde (CH₂O)

Formaldehyde is a dangerous, naturally occurring gas, commonly emitted by painted surfaces, fabrics, carpets, and adhesives.



Humidity

High/Low levels of humidity negatively impact health, supporting mold growth, building decay, occupant discomfort, and supporting virus spread.



Carbon Dioxide (CO₂)

High levels of CO₂ can cause sleepiness, distraction, lethargy and affect productivity, concentration, and work performance.

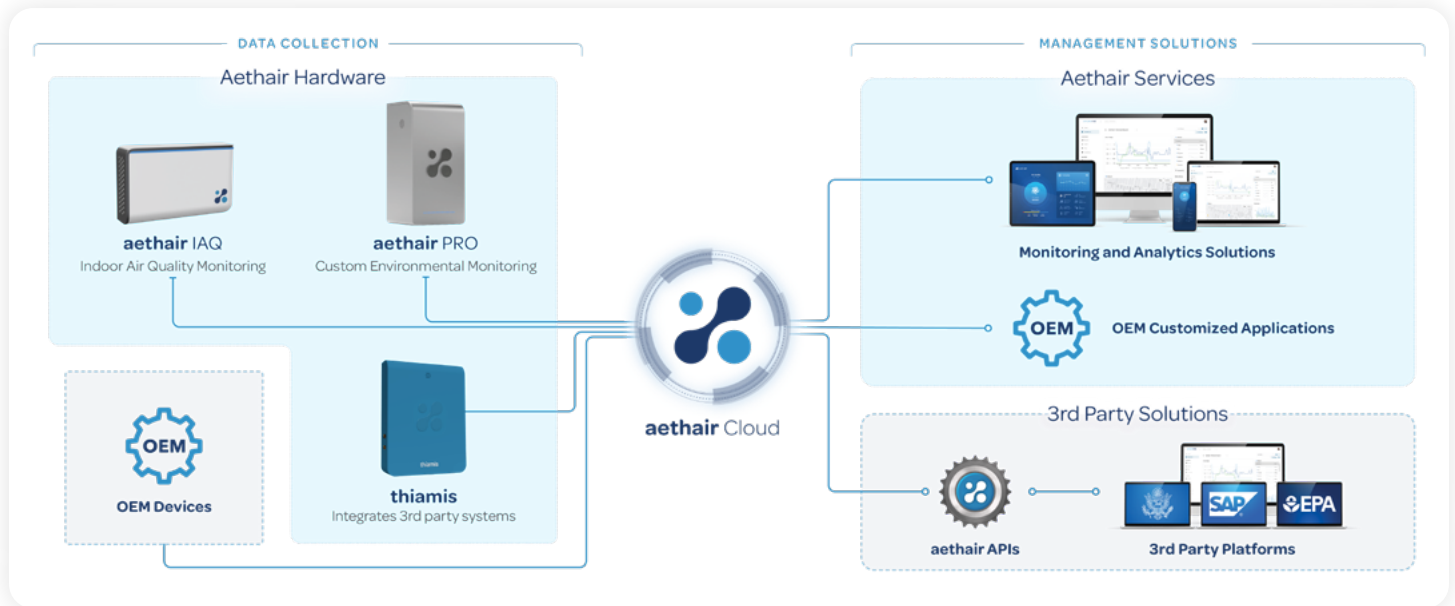


Temperature

Temperature can play a role in mental fatigue, discomfort, reduced physical performance, and delayed information processing.

An Integrated & Seamless Platform

Experience the efficiency of a unified solution that not only simplifies but transforms the monitoring process, setting a new standard in environmental data management. Offering unparalleled flexibility, the Aethair platform seamlessly delivers real-time data, enabling users to monitor their environment from anywhere, at anytime.



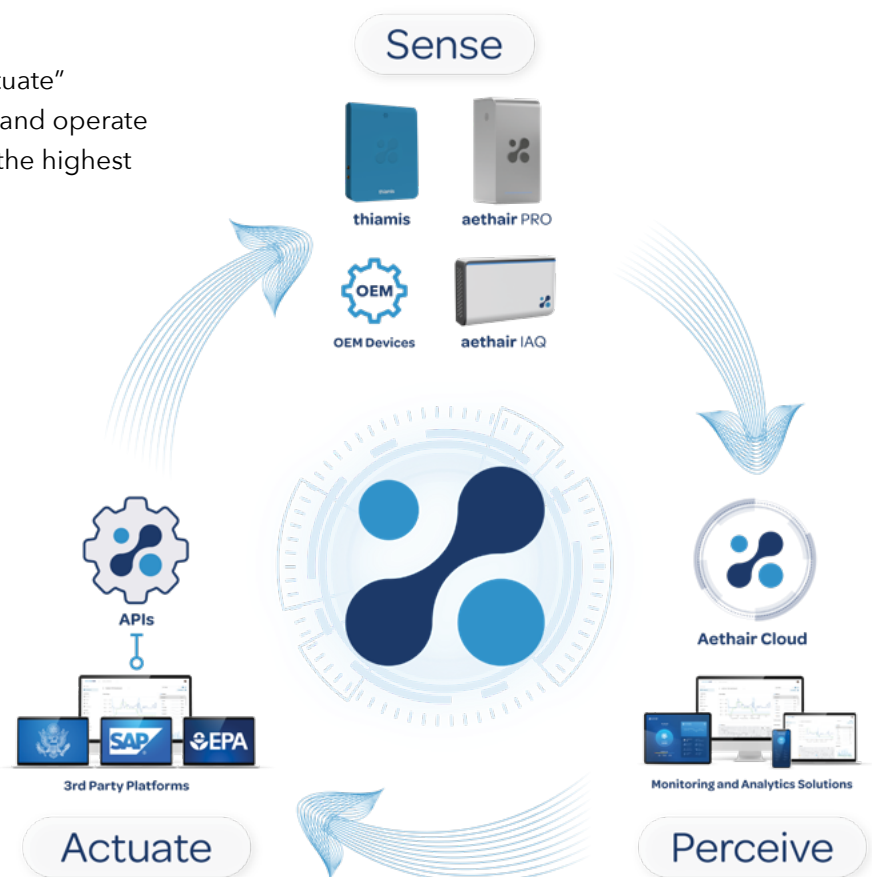
End-to-End Solutions

Our platform follows the "Sense - Perceive - Actuate" closed loop approach, providing easy to install and operate environmental solutions at any scale, following the highest standards for security & privacy.

SENSE Aethair devices continuously sense environmental conditions, communicating real-time data to our platform through a secure 4G LTE connection. This data is then instantly made available online on Environet.

PERCEIVE With Environet, users have access to all their data with the ability to visualize trends, map devices, set up real-time alerts, manage devices and users, generate environmental data reports, and much more.

ACTUATE By harnessing the capabilities of AI and ML and integrating them with real-time data, users can automate responses and leverage their data in a manner only achievable through the Aethair platform.

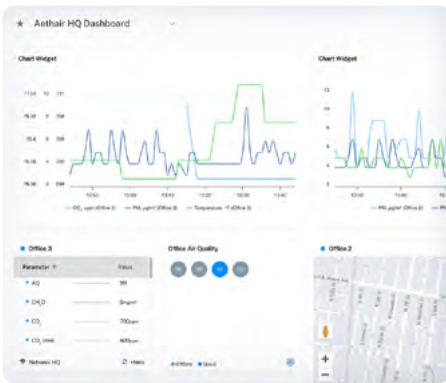


Data Monitoring & Management

Environet is the most advanced web-based environmental monitoring platform available on the market, trusted by large enterprises in mission-critical projects around the world. The platform enables device management, user management, analytics, alerts, real-time device mapping, reports, automations, and much more, all in a user-friendly environment. Users can access these tools, along with real-time environmental data, at any time and from any place in the world, in a secure and encrypted professional environment.

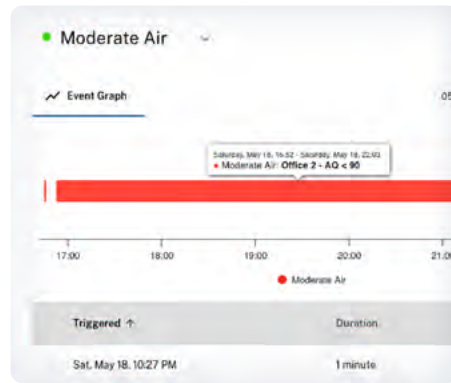
Customizable Dashboard

Create customized dashboards with various widgets for an instant view of real-time environmental data & analytics.



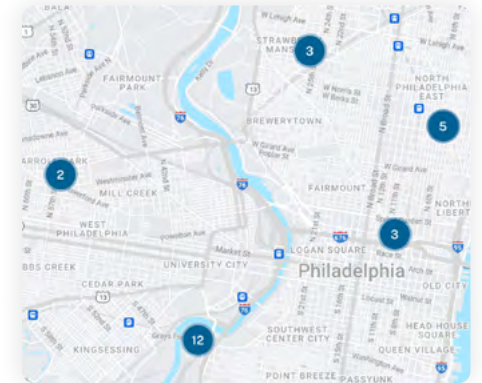
Real-Time Status Alerts

Customizable alerts provide immediate feedback on environmental changes, notifying those who need to know most.



Device & Data Mapping

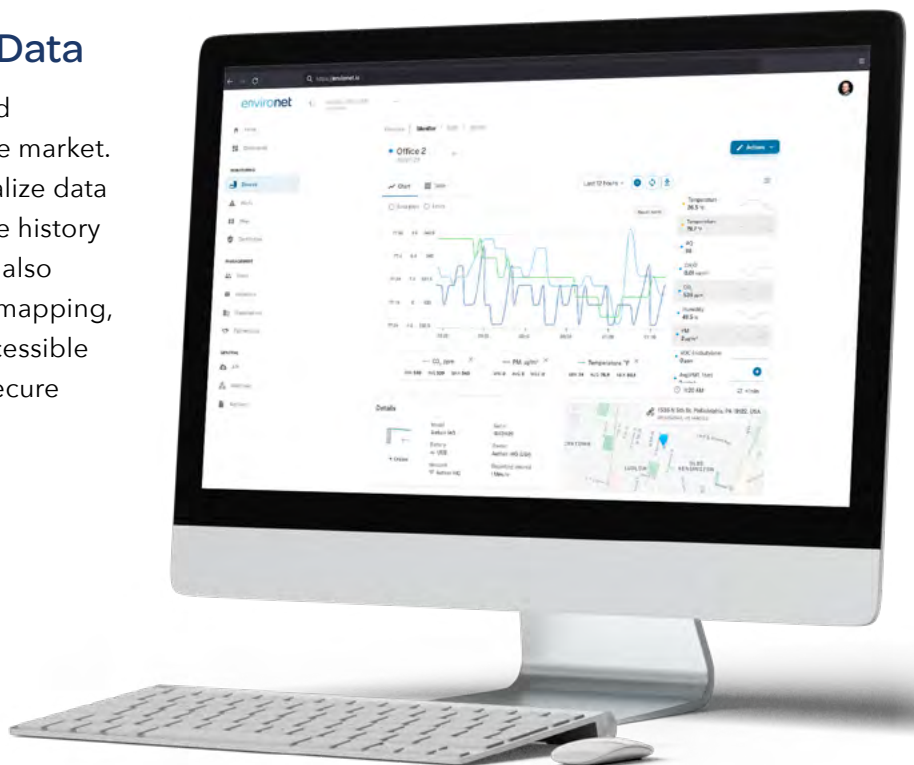
Map connected devices for improved environmental analysis and informed decision-making utilizing real-time data.



Transforming Environmental Data

Aethair offers the most advanced web-based environmental data platform available on the market. Users can monitor specific parameters, visualize data trends, and access all data recorded over the history of the device's operating time. The platform also enables device & user management, alerts, mapping, reports, and much more. These tools are accessible at any time, anywhere in the world, all in a secure and encrypted professional environment.

- 24/7 Access to real-time data
- Numerous tools for data analysis
- Individual parameter monitoring
- Advanced alert system



Dashboards & Public Displays

Inspire confidence within your community and foster a healthy environment, both now and into the future. Aethair Dashboards empower users to monitor air quality conditions using real-time data acquired by Aethair devices such as Aethair IAQ and Aethair PRO, presented in a simple and easily digestible format. These dashboards also reassure occupants that the space they are in is actively monitored for their health and that the air they breathe is safe.



Displays For Every Location

We know that a safe environment is crucial for peace of mind. Aethair enables users to visualize air quality by monitoring, analyzing, and displaying key components that affect health in every indoor space. Aethair Dashboards can be presented in every room or public space to build confidence with occupants and ensure full transparency in order to comply with regulations and other guidelines. Aethair truly lets you see the air you breathe and better understand your environment.

Mobile & Online Displays

Aethair offers public dashboards, available online and through scannable QR codes, that enable occupants to view the real-time air quality status. These are a great way to market air quality and reassure everyone that the air quality is safe and healthy.



The Trusted Environmental Data Platform

Aethair is trusted by large enterprises in mission-critical projects all over the world, thanks to our ability to offer real-time monitoring using Aethair devices as well as 3rd party sensors connected via the Aethair Thiamis. With a strong foundation built on high-security standards, robust encryption, data integrity, and scalable capabilities, we've become the preferred choice for businesses that demand the utmost in data security and reliability. Join us and explore what is possible with secure, on-demand data.



Environmental

Harvest data seamlessly from a variety of sensors and monitors, guaranteeing data integrity, while enhancing operations with cutting-edge tools and intelligence.



Industrial

Experience unparalleled precision, security, and scalability for continuous monitoring, catering to the needs of any industry for compliance and safety.



Commercial

Elevate tenant satisfaction and streamline building ESG operations with powerful data-driven insights for unparalleled efficiency and excellent service.

When Data Matters The Most

With 24/7 access to air quality data from anywhere in the world, the Aethair platform offers users the most flexible monitoring solution available. The benefits and flexibility of using Aethair to view real-time data make it the easy choice for anyone who needs a reliable and secure solution for environmental data. The Aethair platform provides a way for users to:

- Adhere to Standards
- Comply with Regulations
- Improve Safety
- Reduce Liability
- Improve Quality Assurance
- Control Connected Systems



Aethair

Our mission is to leverage cutting-edge AI and IoT technologies to improve our environment and promote the health and well-being of people worldwide.

Over the years, we have garnered numerous awards, deployed devices in over 44 countries, and helped pioneer the future of indoor air quality monitoring. We are dedicated to fostering safer environments everywhere. Whether it's detecting smoke during wildfires or alerting individuals to biological and chemical hazards in any setting, including homes, hospitals, restaurants, shared transportation, and office buildings. We provide comprehensive environment monitoring for both indoor and outdoor settings, alongside third-party device integration, system management, and data integration.



A Global Data Platform

We are the most trusted global environmental and air quality data platform, serving the industry for over a decade. We provide minute-by-minute mission-critical data to professionals in enterprise, government, and military sectors worldwide. Our platform is recognized for its exceptional security, scalability, and data integrity.



36 Billion+
Annual Measurements



44+
Countries



10,000+
Professional Users

How can we help you?

If you would like to find out more about how we can help you, please give us a call or send us an email.

+1 (267) 225-8487
sales@aethair.io

see the air you breathe
aethair.io

